



SEMESTRIAL ON-LINE COURSE

DUEF 2021-22

Diplôme Universitaire d'Etudes Françaises - Levels A1, A2, B1, B2, C1, C2
On-line teaching

PRESENTATION

TEACHING OF WRITING SKILLS (WRITTEN COMPREHENSION AND PRODUCTION), ORAL SKILLS (ORAL COMPREHENSION AND PRODUCTION). MORE SPECIFIC CLASSES ARE ADDED SUCH AS GRAMMAR AND PHONETIC.

200H OF CLASSES INCLUDING MORE THAN 50% IN VIDEO-CONFERENCE WITH TEACHERS SPECIALIZED IN FRENCH AS FOREIGN LANGUAGE.

TEACHING IS ALIGNED ON THE 6 LEVELS OF THE CADRE EUROPEEN COMMUN DE REFERENCE POUR LES LANGUES (CECRL).

TO DETERMINE YOUR LEVEL, A PLACEMENT TEST IS ORGANIZED (ONLY FOR PEOPLE WHO DON'T HAVE A DELF/DALF DEGREE OR A DEGREE FROM AN ADCUEFE CENTRE).

AIMS

TO PREPARE FOR A ON-LINE DUEF (DIPLOME UNIVERSITAIRE D'ETUDES FRANÇAISES), FROM THE LEVEL A1 TO THE LEVEL C2. NEED TO HAVE A COMPUTER OR TABLET WITH GOOD INTERNET CONNECTION.

PROGRAMME

FROM LEVEL B1, OPTIONAL CLASSES ARE OFFERED FOR MORE SPECIFIC PURPOSES (ECONOMIC AND SOCIAL FRENCH, SCIENTIFIC FRENCH...) OR CULTURAL FIELDS (LITERATURE, CULTURE AND HERITAGE...). YOU WILL HAVE TO CHOOSE 2 OPTIONAL CLASSES.



PRACTICAL INFOS

PUBLIC CONCERNED
FOREIGN STUDENTS

REQUIREMENTS
• HOLD FOREIGN CITIZENSHIP
• HAVE A SECONDARY SCHOOL OR AN UNIVERSITY DEGREE
• NEED TO HAVE A COMPUTER OR TABLET WITH GOOD INTERNET CONNECTION

TEACHING HOURS
200H PER SEMESTER INCLUDING MORE THAN 50% IN VIDEO-CONFERENCE

FEES
1400€ PER SEMESTER

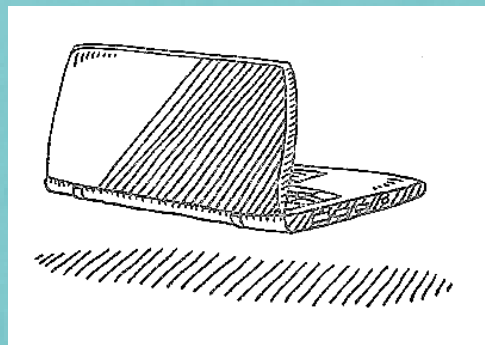


IEFE
FRANÇAIS LANGUE
ÉTRANGÈRE

IEFE
UNIVERSITÉ PAUL-VALÉRY
MONTPELLIER 3

BÂTIMENT EUGÈNE IONESCO
ROUTE DE MENDE
34199 MONTPELLIER CEDEX 5
FRANCE

TÉL : +33 (0)4 67 14 21 01
FAX : +33 (0)4 67 14 23 94
@ : IEFE@UNIV-MONTP3.FR
HTTP://IEFE.UNIV-MONTP3.FR



TERMS OF END-OF-TERM EXAM

THE END-OF-TERM EXAM IS COMPOSED OF YOUR CONTINUOUS CONTROL (HOMEWORK AND EXAMS DURING THE SEMESTER) AND OF YOUR GRADES AT THE FINAL EXAMS. THE DATES OF THE EXAMS ARE SET. THERE IS NO RE-TAKE EXAM. ATTENDANCE IS MANDATORY TO OBTAIN THE DEGREE. THE STUDENT WHO ACQUIRES HIS DEGREE OBTAINS A UNIVERSITY DEGREE, THE «DIPLOME UNIVERSITAIRE D'ETUDES FRANÇAISES» (DUEF), ALIGNED ON THE 6 LEVELS OF THE CECRL.

CALENDAR

	1st SEMESTER	2nd SEMESTER
PRE-REGISTRATION	Friday 16 july (postmark date)	Friday 10 December (postmark date)
REGISTRATION	From Monday 23 to Monday 30 August	From Wednesday 5 to Friday 14 January
PLACEMENT TEST	On-line (the dates will be communicated later)	On-line (the dates will be communicated later)
BEGINNING OF CLASSES	Thursday 2 September	Thursday 20 January
END OF CLASSES	Friday 10 December	Friday 6 May
EXAMS	From Friday 10 to wednesday 15 December	From Monday 9 to Thursday 12 May
HOLIDAYS AND BANK HOLIDAYS	From Monday 1 to Sunday 7 November Thursday 11 November	From Monday, February 28 to Sunday, March 6 From Monday, April 25 to Sunday, May 1

DUEF 2021-22

On-line teaching



GOOD TO KNOW

THE IEFE IS **CENTER FOR EXAMS DELF-DALF**, FROM LEVEL B2 TO LEVEL C2.
6 SESSIONS ARE AVAILABLE :
NOVEMBER DECEMBER,
MARCH, MAY, JUNE, AUGUST.



GOOD TO KNOW

WITHIN THE FRAMEWORK OF EUROPEAN PARTNERSHIPS, THE DUEF IS EQUIVALENT TO 30 ECTS CREDITS PER TERM.

REGISTRATION

EMPLOYEE & JOB SEEKER

SPECIFIC RATE : QUOTE REQUESTS FROM THE SERVICE UNIVERSITAIRE FORMATION CONTINUE OF THE UNIVERSITY AUL-VALERY THROUGH YOUR PÔLE EMPLOI ADVIZER OR YOUR SOCIAL WORKER
CONTACT :
@ : IEFE.FC@UNIV-MONTP3.FR
PHONE : 04 67 14 55 64

TERMS AND CONDITIONS

HOLD FOREIGN CITIZENSHIP
HAVE A SECONDARY SCHOOL OR A UNIVERSITY DEGREE
NEED TO HAVE A COMPUTER OR TABLET WITH GOOD INTERNET CONNECTION

PAYMENT METHODS

CREDIT CARD (IN THE OFFICE ONLY)
BANK CHECK IN EUROS TO THE ORDER : "AGENT COMPTABLE DE L'UPV"
BANK TRANSFER : SEE THE INFORMATIONS BELOW

CASH IS NOT ALLOWED.

CODE BANQUE	CODE GUICHET	N° DE COMPTE	CLÉ RIB	DOMICILIATION
10071	34000	000001003387	27	TPMONTPELLIER
IBAN (International Bank Account Number)				
FR76 1007 1340 0000 0010 0338 727 TRPUFRP1				

1

PRE-REGISTRATION

You will have to send the following documents on the link indicated on our website (<https://iefe.www.univ-montp3.fr/fr/registration>) during the period stated in the calendar :

- the pre-registration form filled
- the copy of your secondary school degree or university degree
- the certified translation in French of that degree
- the copy of the DELF/DALF degree, if you have one
- the copy of the 1st page of your passport
- a pre-payment on the registration fees of 150€* for each session (non refundable)

Once your file and pre-payment are received, we will send you an authorization of registration by e-mail within 1 week.
This document allows non-Europeans to ask for a student visa to the French embassy of their country.

* cost non-refundable. This pre-payment can be used to pay for another course during the same academic year (from September to July).



2

REGISTRATION

You will receive an e-mail with the dates of registration and telling you how to register.
In order to finalise you registration, you will have to send to us the following documents :

- the complete file
- your attestation of CVEC (Contribution Vie Étudiante et Campus)
- the payment of the registration fees :
 - 1250€ per semester if you are already pre-registered
 - 1400€ per semester if you haven't pre-registered

We will give you then an on-line appointment to pass a placement test (except if you have a DELF-DALF degree, or a university degree from a centre of the Association Campus FLE-ADCUEFE).

NO ADMINISTRATIVE REGISTRATION CAN BE MADE IF THE FILE IS INCOMPLETE.

